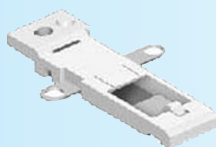
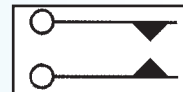


## LEAF SWITCH



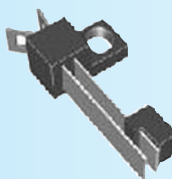
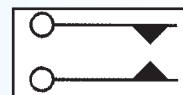
Rating: 1.5A 16V DC

	CONTACT PLATING
LF-008	G = GOLD
	N = NICKEL
	S = SILVER
	X = NIL



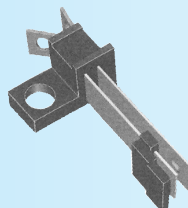
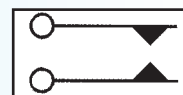
## Rating: 1.5A 16V DC

	CONTACT PLATING
LF-010	G = GOLD
	N = NICKEL
	S = SILVER
	X = NIL



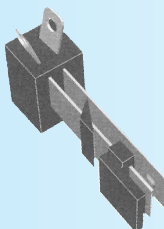
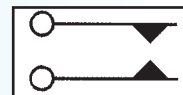
Rating: 1.5A 16V DC

	CONTACT PLATING
LF-011	G = GOLD
	N = NICKEL
	S = SILVER
	X = NIL



## Rating: 1.5A 16V DC

	CONTACT PLATING
LF-013	G = GOLD
	N = NICKEL
	S = SILVER
	X = NIL



Rating: 1.5A 16V DC

	CONTACT PLATING
LF-014-XD	G = GOLD
	N = NICKEL
	S = SILVER
	X = NIL

